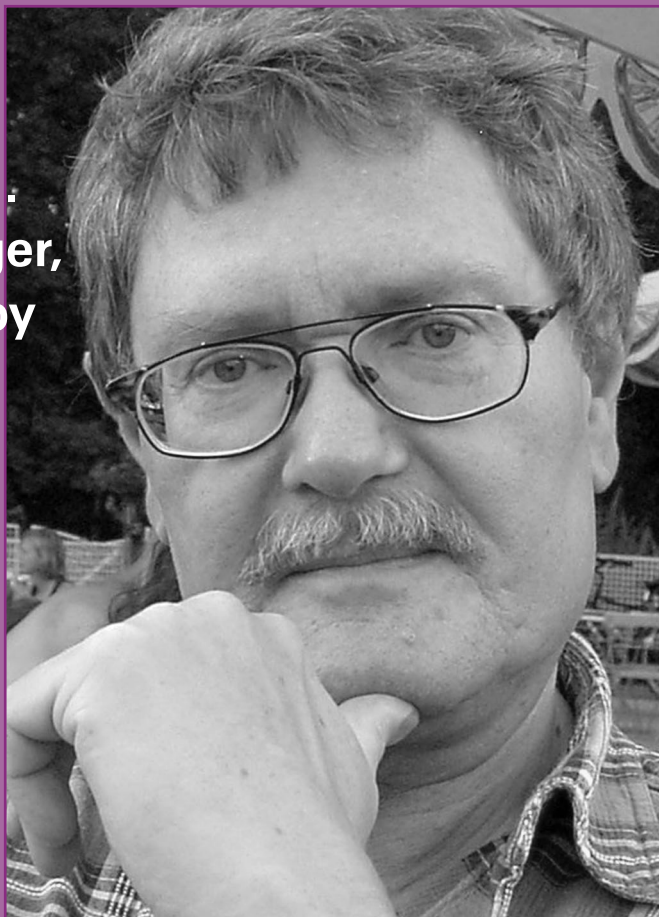


Chess Mail

7/2004

25 years on...
Heinrich Burger,
CC master spy

Highlights of
the new ICCF
ratings: we list
all players now
at 2600 +



News and games from the top CC tournaments

What F.D.Yates said about correspondence chess

Ragnar Wikman on ICCF's rules philosophy

Chess Mail

Year 2004, Volume 8, Issue 7

Chess Mail magazine is published by:
**Chess Mail Limited, 26 Coolamber Park,
Dublin 16, Ireland.**

This is a private limited company,
established in 1996 and incorporated in
the Irish Republic. The directors are
Timothy Harding and Joan Harding.
Fax/telephone: **353-1-4939339**
Email: **editor@chessmail.com**
Website: **http://www.chessmail.com/**

Subscription Rates

A basic subscription for 2004 costs 42 Euro (for 8 issues). We accept Visa & Mastercard or payment direct to our bank (details below). Detailed information about rates and other Chess Mail products may be found on our website.

Bank Information for Payments

Bank of Ireland, Republic of Ireland.
Account: Chess Mail Limited.
Account Number: 73606281.
NSC: 90-02-52 **Branch:** Terenure, Dublin 6
IBAN: IE87 BOFI 9002 5273 6062 81.
BIC: BOFIE2D.

Copyright Notice

© Copyright in original articles belongs to the bylined writers or to Tim Harding where no author is named. No part of this magazine may be reproduced, stored in a retrieval system or transmitted in any form or by any means without the prior permission of Chess Mail Limited.

Editorial Assistant: Clarinda Noonan
General Help: Angela, Claudia & Joan Harding. **Printing:** Reprint Limited, 22/23 South Cumberland Street, Dublin 2.

Readers' Contributions

We welcome articles and games submitted free of charge by our readers.

News Bytes

We hear hopes that a 2005 ICCF Congress might be held in the Vancouver area have fallen through. It seems doubtful that any European country will make an offer for next year. Is it too late? Up to now ICCF always had a Congress in Europe at least every second year. So this is a serious matter, especially as the attendance level in Mumbai looks like it will be disappointing.

Substitute player needed for CM

Chess Mail urgently needs a strong player (2400+) to take over 13 board 3 games in the Rochade 5171 team tournament. We give more details on page 40.

New webserver events

The ICCF webserver is now being used for normal class tournaments as an alternative to email and postal. We recommend readers to try it for themselves.

Second 'ICCF Amici' edition

Alex Dunne recently posted the second edition of the online magazine 'ICCF Amici'. He also found time to get married recently.

'Chess Notes' finds new home

Edward Winter's column has left The Chess Café (again) and can now be found at Richard Forster's website: <http://www.chesshistory.com/winter/index.html>.

CM-ICCF webserver tournament news

IN the CM-ICCF inauguration tournament being played on the new ICCF webserver, at 23rd September 44 games had finished out of the 273.

There were no results yet in Sections 1, 6 and 12. In Section #11 already 11 games ended in draws but there were 18 decisive results in the other groups.

Sicilian Scheveningen (B84)

Thor Løvholt (NOR) –

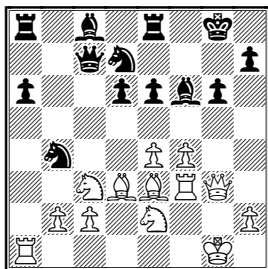
Karlheinz Weber (GER)

CM Iccf-Webchess prelim-4, 2004

1 e4 c5 2 f3 d6 3 d4 cxd4 4 Qxd4
 5 f6 6 c3 a6 7 Qe2 e6 8 0-0 Qe7 9
 Qe3 0-0 10 f4 Qc7 11 g4 Qe8 12 g5
 Qfd7 13 Qd3 Qc6 14 Qh5 g6 15 Qh4
 Qf8 16 Qf3 Qg7 17 Qde2 f5

A mistake says Løvholt; Weber varies from 16...b5 played by Anand against Kasparov, Moscow GP rapid 1996. He thinks White stands better anyhow.

17 gxf6 Qxf6 18 Qg3 b5? 19 a3 b4 20
 axb4 Qxb4



21 e5 Qxd3 22 exf6 Qxb2 23 f5 exf5
 24 Qd5 Qb7 25 f7+ Qxf7 26 Qh4 Qg8
 27 Qh3 h5 28 Qef4 Qe5 29 Qxh5
 gxh5 30 Qxh5 1-0.

Alekhine's Defence (B04)

Roald Berthelsen (NOR) –

Alan Rawlings (ENG)

CM Iccf-Webchess prelim-10, 2004

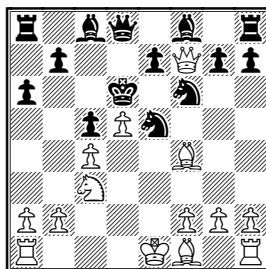
1 e4 Qf6 2 e5 Qd5 3 d4 d6 4 Qf3 dxe5
 5 Qxe5 Qd7 6 Qxf7

RB: Instead of 13 Qd1!! (recommended in the book 'Attack with Mikhail Tal') I decided to follow Anand's 13 b4 in his game vs Bilauer (Frankfurt 1994), because I was afraid of 13 ...g5.

I think Alan is correct when he pointed out "Anand's move 15 Qxe5+ must put this whole line out of business."

Let me point out that I'm responsible for the second part of the game only. The first part belongs to Anand.

6...Qxf7 7 Qh5+ Qe6 8 c4 Q5f6 9
 d5+ Qd6 10 Qf7 Qe5 11 Qf4 c5 12
 Qc3 a6



13 b4 Qb6 14 bxc5+ Qxc5 15 Qxe5+
 Qxe5 16 Qe2 Qa3 17 0-0 Qxc3 18
 Qfe1 Qf5

Bilauer tried 18...Qd6 without luck.

19 h4 b5 20 Qad1 bxc4 21 Qf3 Qb8 22
 Qe4 h5 23 d6 Qb5 24 Qxc4 Qxc4 25
 Qxc4 Qd7 26 dxe7 Qxe7 27 Qe2 Qg6
 28 Qxd7 Qxd7 29 Qd3+ Qf6 30 Qf4+
 Qe6 31 Qc4+ Qd5 32 Qe4+ 1-0.

Top of the October ICCF Rating List

The tables show all players with a fixed rating of 2600 or higher. This list is valid for events starting 1/10-1994-31/3/2005.

Van Oosterom, Joop J	NED	GM	2754
Andersson, Ulf	SWE	GM	2737
Berliner, Hans	USA	GM	2726
Timmerman, Gert Jan	NED	GM	2723
Elwert, Hans-Marcus	GER	GM	2717
Rause, Mrs.Olita	LAT	GM	2706
Frey, Kenneth	MEX	GM	2700
Tarnowiecki, Dr.Harald	AUT	GM	2688
Costa, Carlos Evanir	BRA	GM	2685
Anton, Volker-Michael	GER	GM	2683
Neumann, Joachim	GER	GM	2674
Umansky, Mikhail M.	RUS	GM	2673
Gottardi, Gottardo	SUI	GM	2664
Hertel, Peter	GER	GM	2663
Schön, Wolfram	GER	SM	2663
Léotard, Christophe	FRA	GM	2658
Sprengelmeier, Dr. Claus	GER	IM	2655
Nizynski, Maciej	POL	GM	2654
Van Geet, Dr.Dick	NED	GM	2653
Hansen, Curt	DEN	GM	2653
Voss, Maximilian	GER	GM	2651
Hamarat, Tunc	AUT	GM	2650
Khasin, Abram	RUS	GM	2650
Timm, John C.	USA	GM	2649
Pinkovetsky, Semen U.	RUS	GM	2645
Gaprindashvili, Paata A.	GEO	SM	2644
Mehlhorn, Uwe	GER	-	2644
Gerhardt, Frank	GER	GM	2643
Van der Hoeven, David A.	NED	GM	2640
Normantas, Valentinas	LTU	GM	2640
Sołtau, Achim	GER	GM	2640
Lepikhov, Aleksey G	UKR	GM	2637
Álvarez, Roberto G	ARG	GM	2635
Walsh, Héctor	ARG	SM	2634
Boger, Raymond	NOR	GM	2633
Kujala, Auvo	FIN	GM	2633
Nimtz, Dr.Manfred	GER	GM	2633
Bang, Erik	DEN	GM	2631
Bachmann, Andreas	GER	GM	2630
Poulsen, Allan	DEN	GM	2630

Kreuzer, Martin	GER	GM	2629
João, Névio	BRA	SM	2628
Sender, Christian	GER	GM	2628
González, Juan B	ARG	-	2626
Toro Solís, Guillermo	CHI	GM	2626
Skrobek, Ryszard	POL	GM	2625
Busemann, Stephan	GER	GM	2623
Giuliani, Sante	ITA	-	2623
Pheby, Ian M.	ENG	SM	2621
Blokh, Maksim V	RUS	GM	2620
Chytilek, Roman	CZE	GM	2619
Raupp, Thomas	GER	GM	2619
Geenen, Marc	BEL	GM	2618
Smith, Robin	USA	GM	2618
Zanetti, Vittorio	ITA	IM	2618
Hector, Jonny	SWE	GM	2616
Meleghegyi, Csaba	HUN	GM	2616
Sakai, Kiyotaka	JPN	SM	2616
Zilberberg, Alik S	USA	GM	2614
Perevertkin, Vladimir	RUS	SM	2613
Hoffmann, André	GER	SM	2612
Morgado, Juan S	ARG	GM	2612
Bern, Ivar	NOR	GM	2611
Branding, Gerd	GER	GM	2610
Raykin, Leonid G	RUS	SM	2609
Stull, Norbert	LUX	GM	2609
Valent, Peter	AUT	SM	2609
Hall, Richard VM	ENG	GM	2607
Webb, Simon	ENG	GM	2607
Lybin, Dmitry V.	BLR	GM	2606
Nyvt, Zdenek	CZE	SM	2606
Voyna, Alexandr	UKR	GM	2606
Kucukali, Arif	TUR	SM	2605
Pasko, Wieslaw	POL	SM	2604
Reppmann, Dieter	GER	IM	2603
Yarkov, Vladimir	RUS	SM	2603
Brenke, Dr. Andreas	GER	SM	2602
Casabona, Dr.Claudio	ITA	GM	2602
Lecroq, Michel	FRA	GM	2602
Brooks, Dr.Ian S.	ENG	GM	2601
Staudler, Horst	GER	SM	2601
Ekebjærg, Ove	DEN	GM	2600
Knoll, Hermann	AUT	IM	2600
Toth, Bela	SUI	IM	2600